

TOGETHER  
WE ARE

# ANNUAL REPORT

AS OF MAY 31, 2024

*Making  
a  
Difference*



**BALLENISLES**  
CHARITIES FOUNDATION

*Making a Difference*

ALL PROCEEDS SUPPORT THE  
BALLENISLES CHARITIES FOUNDATION, INC.

[WWW.BALLENISLESCHARITIESFOUNDATION.ORG](http://WWW.BALLENISLESCHARITIESFOUNDATION.ORG)  
[INFO@BALLENISLESCHARITIESFOUNDATION.ORG](mailto:INFO@BALLENISLESCHARITIESFOUNDATION.ORG)

# MISSION STATEMENT

The mission of BallenIsles Charities Foundation is to render financial and in-kind support to civic and not-for-profit organizations within Palm Beach County that provide programs and services in the broad categories of Civic, Health & Human Services, Environment, and Education, designed to assist, encourage and promote the well-being of the residents and the communities in which they are located.

Visit our website at [www.ballenislescharitiesfoundation.org](http://www.ballenislescharitiesfoundation.org) for a history of your Foundation and the events that have made the last ten years so amazing. Connect with our activities and the organizations we support on [Instagram](#) and [Facebook](#).

## DONORS

Because of your generosity, your BallenIsles Charities Foundation has awarded grants of over \$8.3 million to local non-profit and civic organizations since our inception in 2011. Our grants support specific programs, such as computers for an after-school program, college tuition assistance, food subsidies, service dog training for disabled veterans, dental care, beds and clothing for children in need.

## SPONSORS

In keeping up with the times, and the technology available to us, we have expanded our Corporate Sponsorship Program. Please take note of the wonderful businesses in the area that have joined us in helping to fulfill our mission. See them on our website and on the eBlasts and emails distributed by your Foundation. When you visit them, make sure you thank them for their support.

## VOLUNTEER ACTIVITIES

Many people have expressed an interest in giving their time and effort where needed. Our Community Service arm has been building relationships with many of our Grant Recipients to create opportunities for BallenIsles residents, of all ages, to do something, and to get to know the organizations first-hand.

## GRANTS

Organizations seeking our support must complete a detailed application and be vetted by the Foundation before receiving a grant. Lasting relationships are built between your Foundation and the organizations throughout the year as we follow their activities, and they share their successes with us.





# MESSAGE FROM THE PRESIDENT

"No one has ever become poor by giving." ~ Anne Frank

Your Charities Foundation has the lofty mission of rendering financial and in-kind support to civic and not-for-profit organizations within Palm Beach County that assist, encourage, and promote the well-being of the residents and communities outside our gates. Since 2011, due entirely to your support and our business sponsors, we've assisted Civic, Health & Human Services, Environmental and Educational programs with cumulative grants in excess of \$8.3 million.


This year you made it possible for us to provide 59 grants, plus two additional one-time impact grants, to the tune of \$1.35 million. This is amongst our highest totals ever!

And every single approved grant recipient was first vetted with in-person visits to assess the value of the program to the community and the financial health of the requesting organization. All this is done by volunteers and experts who reside within BallenIsles with no paid staff.

In addition to our monetary awards, we offer Community Service opportunities whereby our residents can volunteer their time, expertise, and a helping hand at local organizations – from feeding the hungry to building homes with Habitat for Humanity, from assisting at Special Olympic events to wrapping presents for children during the holiday season.

All this and more are accomplished because of the incredibly generous donations (of time, money, and a little sweat) on the part of our community residents. We are awed and incredibly grateful to all of you. Turn the pages to see how your donations and efforts have been guarded and dispersed throughout our community.

Dear neighbors, you are fantastic!



Your BallenIsles Charities Foundation President



BALLENISLES CHARITIES FOUNDATION, INC., A 501(C)(3) NONPROFIT ORGANIZATION BASED IN FLORIDA, DOES NOT SOLICIT CONTRIBUTIONS FROM PERSONS OUTSIDE OF FLORIDA. A COPY OF THE OFFICIAL REGISTRATION AND FINANCIAL INFORMATION MAY BE OBTAINED FROM THE DIVISION OF CONSUMER SERVICES BY CALLING TOLL-FREE (800.435.7352) WITHIN THE STATE. REGISTRATION DOES NOT IMPLY ENDORSEMENT, APPROVAL OR RECOMMENDATION BY THE STATE. FLORIDA REGISTRATION #CH35440.

100 BallenIsles Circle, Palm Beach Gardens, Florida 33418 ~ [info@ballenislescharitiesfoundation.org](mailto:info@ballenislescharitiesfoundation.org)



# WHO WE ARE

## BOARD OF DIRECTORS

**Mark Freeman, President**  
**Ken Horner, Vice President/Treasurer**  
**Jody Passov, Vice President**  
**Chere Goldstein, Vice President**  
**Carl Ekstein, Secretary**  
**Allen Hirsch, Director**  
**Diane Brill, Director (BICA)**  
**Linda Greenhouse, Director (BICC)**



Your current BallenIsles Charities Board and Committee Chairs, along with countless other volunteers, continue to carry on the mission of the Foundation to render financial and in-kind support to civic and not-for-profit organizations within Palm Beach County that provide programs and services in the following broad categories – Civic, Health & Human Services, Environment, and Education – designed to assist, encourage and promote the well-being of the residents and the communities in which they are located. We can only render that support through the generous donations we receive from you, the members of our BallenIsles community and our Sponsors, who see how carefully and professionally we approach our “job”.



## COMMITTEE CHAIRS

**Chere Goldstein, Communications & Residential Development**  
**Allen Hirsch, Community Service**  
**Ken Horner, Governance**  
**Jody Passov, Grants**  
**Joel Schlesinger, Corporate Development**

- We reach out to the BallenIsles community through emails that tell you about the more than 50 organizations to which we grant funding each year.
- We handle the donations and expenses professionally and with the assistance and oversight of the Club.
- We reach out to professionals and businesses that work both in and outside of our gates.
- We monitor the organizations and charities we support with regard to how our grants are used.
- We develop and maintain professional relationships with other local foundations.

Please, if you already support us, share your feelings and your knowledge of us with your friends. If you don't already support us, we hope you will learn a little bit more about us and consider investing a little bit of your time or your money to help us continue our mission.

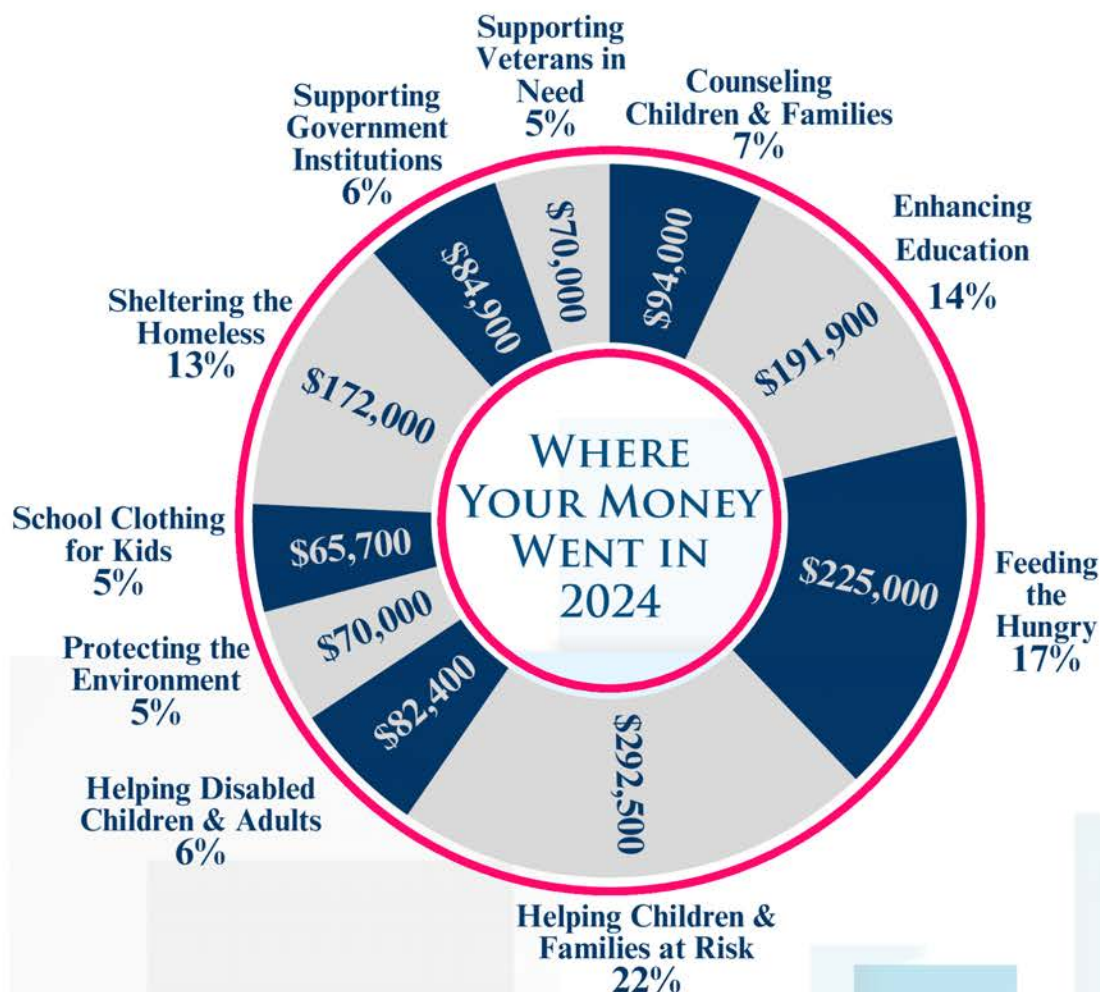
# THE GRANTS COMMITTEE AND HOW IT WORKS

Your BallenIsles Charities Foundation is a charitable foundation. Through donations, sponsorship funds, raffles, and Tribute Cards we raise money to be distributed to working charities. At the end of our Giving Season, we distribute those funds to local organizations that have made requests through the Grant Process.

When you give to BICF, your donation will go to support specific programs and projects, absent of administrative costs and overhead. These programs might be cut from the general budget when money is tight. Grant programs are completed within one year, and the organizations are held accountable to us to demonstrate that the program was completed and the funds were used accordingly.

We are unique and highly regarded as a foundation in our Florida community. We vet the organizations and programs carefully, not just by saying, "They've been around a long time. They must be good." We visit the properties and meet, sometimes for hours, with the program directors. We have a forensic accountant review their records. We spend hours discussing applications and deciding how best to apportion the funds we have taken in during the year. We do such a thorough job that other local foundations have followed our lead and are funding the programs and projects we have already vetted. Our reputation is stellar.

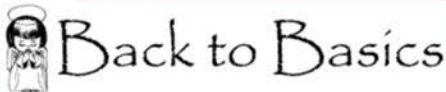
So, when you ask yourself why you should be part of the BICF family, remember that your contribution is not exclusive of other direct contributions you are inclined to make, but inclusive of the greater good that we all are trying to foster.





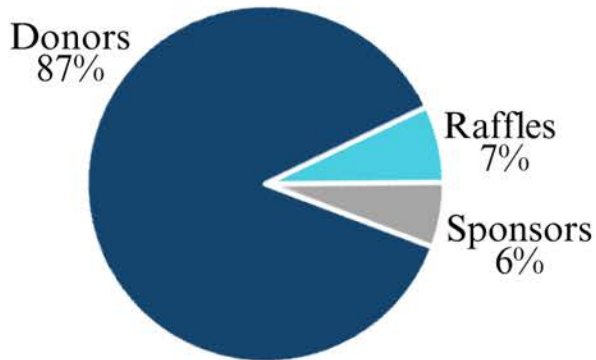


An AVID School  
Panther POTENTIAL is Limitless

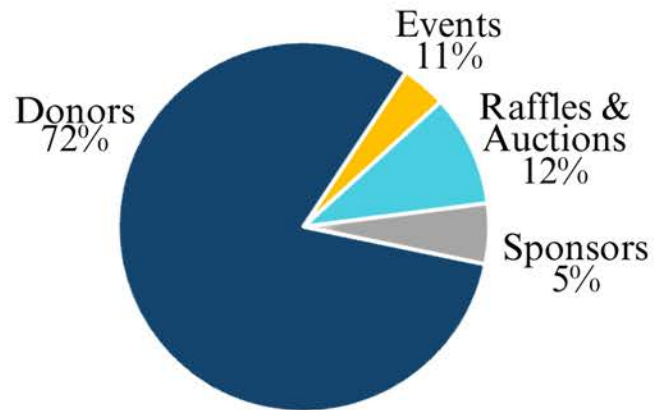


# FINANCIAL INFORMATION

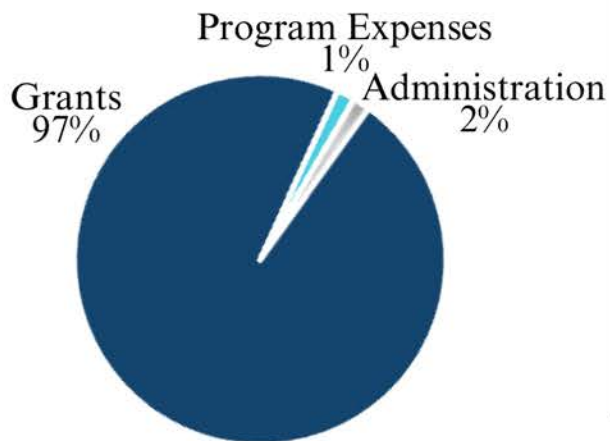
**REVENUE 2024**



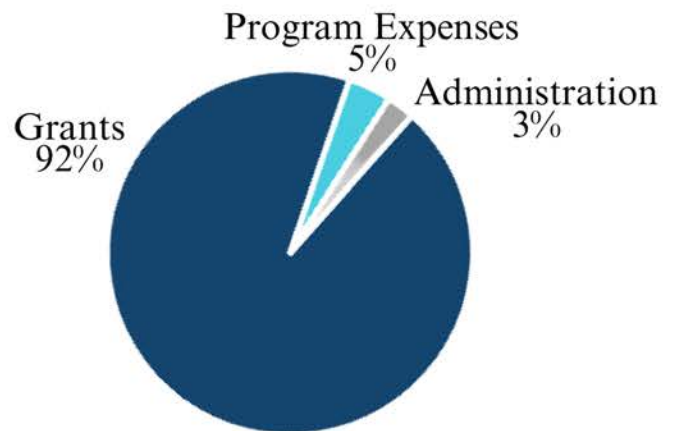
**FIVE-YEAR REVENUE 2020 - 2024**



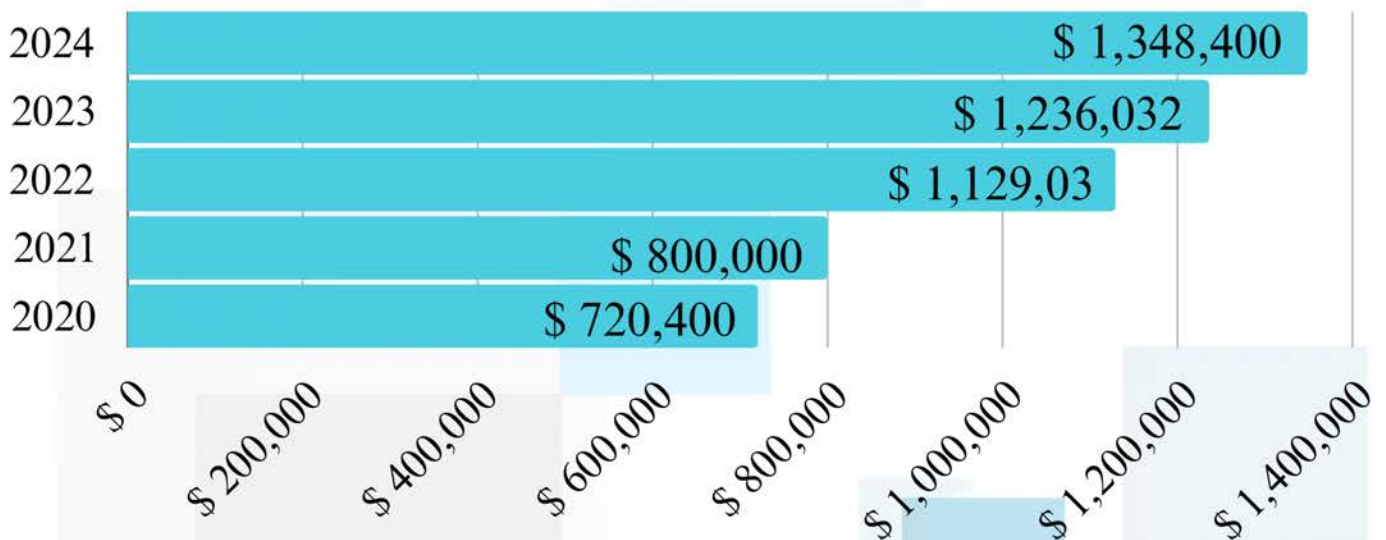
**EXPENSES 2024**



**FIVE-YEAR EXPENSES 2020 - 2024**



## GRANTS AWARDED





# 2024 GRANT RECIPIENTS

## HEALTH & HUMAN SERVICES

211 Palm Beach/Treasure Coast .....	Emergency HelpLine
Adopt-A-Family of the Palm Beaches, Inc. ....	School Readiness Kits
Alzheimer's Community Care .....	Family Nurse Navigator and ID Locator Services
Cancer Alliance of Help & Hope, Inc. ....	Champions of Help & Hope Baskets
Caridad Center, Inc. ....	Pediatric Dental Clinic
Center For Child Counseling .....	Childhood Trauma Response Program
Center for Trauma Counseling .....	Accessible Mental Health Care for Children, Adolescents and Families
Chasin A Dream Foundation .....	Hospital Backpack Program
Children's Home Society of Florida .....	Safe Harbor Shelter and Counseling Services
Clinics Can Help .....	Kinder Project - Durable Medical Equipment
El Sol, Jupiter's Neighborhood Resource Center .....	El Sol Promotores de Salud (Health Promoters)
Feed the Hungry Pantry of Palm Beach County.....	Feed the Hungry Pantry
Ferd & Gladys Alpert Jewish Family Service.....	Mentoring for Kids Emergency Assistance Fund
Florida Outreach Center for the Blind, Inc. ....	Social and Life Skills Training for the Visually Impaired
Friends of Foster Children .....	Support Group Speakers & Services
Genesis Assistance Dogs, Inc. ....	Mobility Independence through Assistance Dog Service
Grandma's Place, Inc. ....	Emergency Shelter Services & Family Support Programs
H.A.C.E.R. Ministry Corp. ....	La Casita Food Pantry
Healthy Mothers, Healthy Babies Coalition of Palm Beach County .....	Basics4Babies - Emergency Pantry for Infants
HomeSafe .....	Transformative Environments for Foster Kids
Love Serving Autism .....	Inclusive Fitness and Therapeutics Program
National Council of Jewish Women, Palm Beach Section .....	Kids Community Closets
Palm Beach County Food Bank .....	Childhood Hunger Initiatives
Paws 4 Liberty, Inc. ....	Service Dogs for Veterans Program
Pediatric Oncology Support Team .....	Butterfly Program: Help & Hope to Children
Sea Turtle Adventures .....	Sea Turtle Adventures iCare Program
Sweet Dream Makers .....	A Bed of My Own
The Arc of Palm Beach County .....	Music and Arts Therapy Program
The Community Health Center of West Palm Beach ..	Continuum of Care Program
The Fund for the West Palm Beach Police .....	Cops and Scholars
The Homeless Coalition of Palm Beach County, Inc. .	Breaking Bread – Breaking Barriers
The Jacob S. Zweig Foundation .....	Sole Necessities
The Lord's Place .....	Women's Supportive Housing



# 2024 GRANT RECIPIENTS

Vita Nova Inc. ....	Homeless Youth Transitional Housing Program
Wounded Veterans Relief Fund .....	Emergency Financial Assistance to Disabled Veterans and their Families

## ENVIRONMENTAL

Busch Wildlife Sanctuary.....	Wildlife Rehabilitation Center
Healthy Aquatics Marine Institute .....	Reef Institute Coral Nursery Expansion

## CIVIC

City of Palm Beach Gardens .....	Community Events at Veterans Plaza
Palm Beach Gardens Fire Rescue .....	Whole Blood Program
Palm Beach Gardens Police Department .....	Lemur 2 Special Response Drone
Palm Beach Gardens Police & Fire Rescue Foundation .....	Emergency Financial Relief Fund for First Responders

## EDUCATION

American Association of Caregiving Youth .....	Caregiving Youth Project
Back to Basics .....	Uniform and Angel Programs
Best Foot Forward Foundation, Inc. ....	Grounded for Life
Big Brothers Big Sisters of Palm Beach and Martin Counties, Inc. ....	Beyond School Walls
Boys & Girls Clubs of Palm Beach County, Inc. ....	Junior Staff Youth Employment
Carson Scholars Fund .....	Reading Room in Title 1 Elementary School
Connections Education Center of the Palm Beaches ...	Let's Keep "Connected"!
First Tee of the Palm Beaches .....	Outreach and Special Needs Programs
Habitat for Humanity of Palm Beach County .....	Weitz Construction Academy at Seminole Ridge High School
Palm Beach County Sheriff's Foundation .....	Sheriff's Youth Scholarship Program
Palm Beach State College Foundation .....	First Generation in College Scholarship Program
Path to College .....	Making a Difference for Low-Income Students Job Coach for Vocational Training Program
Symphonic Band of the Palm Beaches .....	Instrument Donation Program
Take Stock in Children - West Palm Beach .....	Take Stock in Children Expansion Program
The Learning Academy at the Els Center of Excellence .....	Educational Curriculum for Elementary Students with Autism Spectrum Disorder
The Learning Center at the Els Center of Excellence ...	The Leadership Academy
Watson B. Duncan Middle School .....	School Technology Grant
West Jupiter Community Group .....	Tutorial Titans Sports Program



# FEED THE HUNGRY FOOD PANTRY OF PBC



In 2019, BICF funded the purchase of a refrigerated food truck to enable Feed the Hungry Pantry of PBC to collect fresh and frozen foods for distribution to food insufficient members of our community. That endeavor has been so successful that we felt there was a need to fund additional trucks. Two more refrigerated trucks have created a fleet with cabs of white, red and green. Honk and wave when you see one of these magical vehicles on the road. If it is safe to do so, take a picture and send it to us! It feels so good to see the efforts of our work.



## PALM BEACH GARDENS POLICE & FIRE RESCUE FOUNDATION

The PBG Police & Fire Rescue Foundation operates right here in the Gardens to support the efforts of our Police, Fire and Rescue units in ways our tax dollars can't. Realizing there was a need to support these dedicated men and women and their families in times of extraordinary need, they established the Relief Fund with the support of your BallenIsles Charities Foundation.

You might recall that one of our brave fire fighters was sidelined by lung cancer most likely the result of exposure to toxins on the job. The Palm Beach Police & Fire Rescue Foundation's Emergency Relief Fund was able to assist his wife in joining him during medical treatments provided away from home. That helped make his last days more comfortable and allowed his family to be together longer.

Our commitment to maintaining this fund means the world to the entire force of emergency workers. They certainly know how much we care for them and appreciate their contributions to our safety. We are proud to do something to help enhance their quality of life, as they help keep us safe.





# BALLENISLES CHARITIES FOUNDATION DISPLAY

**BallenIsles Country Club Demonstrates Continued Support for BICF**



Within the heart of BallenIsles Country Club beats a steadfast alliance with the BallenIsles Charities Foundation. The Foundation stands as a beacon in the BallenIsles Community, embodying the spirit of benevolence, compassion, and community care shared by our residents and patrons. While distinct from the Club, the Foundation flourishes under the nurturing embrace of both the Country Club and the Community Association. Our benefactors, primarily residents, sponsors and local businesses, intertwine in a symphony of generosity within our realm.

As you wander the corridors of our Clubhouse, meandering towards Harry's Bar and Circle 100, a new spectacle unfolds before you. Behold the names of our esteemed Board Members. Witness the vast tapestry of charitable causes your contributions support. And glimpse the dedication of our volunteers.

En route to a sumptuous feast at Evolution, a captivating sight awaits. A new display screen beckons, displaying videos and images that capture the essence of our hosted events and community engagements, alongside heartfelt testimonials from those touched by our grants.



# TRIBUTE CARDS

Recognize the great value of the people you love and admire.  
Show them and their loved ones that they matter to you.  
Have a beautiful custom card mailed on your behalf to  
honor or memorialize any occasion.

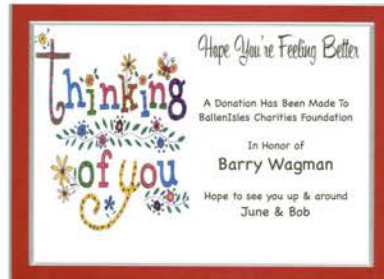


Simply go to our website at  
[www.BallenIslesCharitiesFoundation.org](http://www.BallenIslesCharitiesFoundation.org)  
and provide the recipient information,  
your card and wording choices.

**Your chosen donation to the BallenIsles Charities Foundation  
can be charged to your club account or paid by check.**

A charitable donation in the name of your designee is often a most  
thoughtful and appreciated recognition.

These cards are beautiful, professional, and can be easily customized to your needs.



**Orders can be placed online through our website.**

Please contact [TributeCards@BallenIslesCharitiesFoundation.org](mailto:TributeCards@BallenIslesCharitiesFoundation.org) if you have any  
questions.

BallenIsles Charities Foundation will provide a personalized recognition  
card for any occasion you wish to designate. This card will be mailed to your  
designee as you direct to acknowledge the occasion. This unique gift  
will be appreciated because it will

*Make a Difference*

in the lives of real people who need our assistance.





# COMMUNITY SERVICE

## Having Fun, Making New Friends

## *Making a Difference*

It started with a spring cleaning clothing donation drive for **Habitat for Humanity** at the ForePlex, now including **Clinics Can Help**. It expanded to gift wrapping at the holidays, and a shoe collection drive/shoe cleaning afternoon for **In Jacob's Shoes**.

It soon expanded to a few different food drive activities for **Feed the Hungry Pantry** and the **Palm Beach County Food Bank**. And two years ago it branched out to provide the volunteer support for a **Special Olympics Golf Event**.

Whatever it is, you know that it is fun and rewarding for BallenIsles residents and family to participate in hands-on volunteer efforts for organizations we have vetted and support.

Watch for this year's list of activities and make sure to open those eblasts when they come out. Sign-up is a snap, by just clicking on the link and providing a little information.

Grab your friends, your children, your spouses.

Join us in *Making a Difference*, and learning even more about the communities outside of our gates.



## VOLUNTEERS

Are you a Planner? a Doer? a Leader? or a Follower?  
Do you have Great Ideas you want to share?  
Are you looking for something rewarding to do with a little bit of your time?  
Do you just want to learn more about who we are and what we do?

Are you looking to *Make a Difference*?

If this sounds like you, please consider joining us!

Contact any of the Board Members or Committee Chairs.  
Send an email to [info@ballenislescharitiesfoundation.org](mailto:info@ballenislescharitiesfoundation.org)

# CORPORATE SPONSORS

## DIAMOND LEVEL SPONSORS \$5,000 AND ABOVE

Hedrick Brothers Construction  
Legacy Contracting Solutions  
Leibowitz Realty Group - Andrew & Michael Leibowitz, Joanne & Seth Honowitz  
Mercedes Benz of North Palm Beach  
Metros Wood  
The Weisberg Group - Lee Weisberg & Jillian Benson  
Troon  
Visiting Angels of the Palm Beaches



LEIBOWITZ  
REALTY GROUP

Andrew & Michael Leibowitz  
Joanne Feldman & Seth Honowitz





# CORPORATE SPONSORS

## GOLDEN LEVEL SPONSORS \$3,000



Brightway Insurance

BNY WEALTH

Club Car

Cotleur & Hearing

Elegant Landscape & Design

Garabar Roofing, Windows & Doors



Illustrated Properties - Laura Cole & Tana Gaskill

Interiors by Marsha

Leo Roofing & Construction

Mathison Whittles, LLP

Merrill - The Gurien Group



## SILVER LEVEL SPONSORS \$1000



Bank of America

Bonded Home Watch, Inc.

Doane & Doane, Attorneys at Law  
Gardens Home Management Services

Gator Security

Lotz of Care Homewatch, LLC

LotzCo, Inc.

Print Headquarters

Stifel Investment Services



**Lotz of Care Homewatch, LLC.**  
Providing Homeowners with Peace of Mind since 1995

561-444-9659



**STIFEL**  
Investment Services Since 1890  
John Murphy, CIMA®, CFP®  
(561) 615-5315

# THE FOUNDATION'S PRINCIPAL DONORS

THE FOUNDATION WISHES TO ACKNOWLEDGE AND THANK ITS DONORS FOR THEIR SUPPORT.  
LISTED BELOW ARE THE AGGREGATE DONATIONS OVER THE PAST FIVE YEARS FOR OUR RESIDENTS AND OTHERS.

## \$50,000 AND ABOVE

*Aggregate donations over the past five years*

Earl Abramson & Sheila Schlaggar  
Paul & Gail Altieri  
Marilyn Cohen  
Irwin & Frankie Edenzon  
Barbara Baumstein & Carl Ekstein  
Mark & Fran Freeman  
Ned & Marcia Kaplin  
Sally Nathanson  
Doris Penn  
Art Roffey & Gail Danto  
Willow Springs Charitable Foundation

---

## \$30,000 TO \$49,999

*Aggregate donations over the past five years*

Jim & Judy Bloom	Nathan & Shelley Rabhan
Jeffrey & Marjorie Coopersmith	Jack & Myrna Robbins
Danto Family Foundation	Gerald Rosenthal
Richard & Diane Farber	Lawrence & Elaine Rothenberg
Philip Farmer	Ronald & Brenna Sadowsky
Steve & Marsha Funk	Sylvia Strauss
Kenneth & Felice Hassan	Carl & Lynn Swanson
Ken & Barbra Horner	Peter & Marlene Tattle
George & Jan Joy	Nan & Ira Theodore
Stephen & DeDee Lovell	Stephen & Elaine Tumminello
Brenda Noviello	William & Suzy Vogler
Howard & Jody Passov	

---



# THE FOUNDATION'S PRINCIPAL DONORS

## \$15,000 TO \$29,999

*Aggregate donations over the past five years*

Andrea Abraham & Salvatore Castagna	Barry Gossett & Diane Gillings	Fred & Carole Pritzker
Jim Adelman	Jerry & Zee Jay Greenspan	Patricia Rado
Melody Alstodt	Victor & Melanie Greenstein	Sally Rogen
Michael & Carol Antino	Ronald & Susan Grodsky	Marc & Emily Schwarz
June Anton	Keith & Lori Hartman	Ira Sherman & MJ Meier
David Bencze & Betty Herman	Eugene & Janet Hilzenrath	Sydelle Sonkin
Bruce & Socki Berg	Allen & Miriam Hirsch	Hall Sisson & Wendy Levine
John & Martha Bilodeau	Peter & Joan Hoffman	Larry & Sheila Steinberg
Eugene & Joyce Bolton	Linda Inerfeld	Michael & Laraine Stevens
Avrom & Rosetta Brodsky	Paul & Lisa Karofsky	Linda Teitelbaum
Michael & Robin Cantor	Lawrence & Karen Kiefer	Joan Tofias
Bill & Mary Ann Champlin	Leon & Myrna Kirschner	Michael & Ellen Tomkin
Harvey & Belle Cole	Murray & Sylvana Klein	Martin & Susan Ungar
Richard & Natalee Cuccioli	Stevan & Susan Lipson	Robert Wax & Susan Krell
Alan & Karen Dawes	Donald & Grace Luneburg	Jorgen & Lise Wedel
John & Shelley Day	Jeffrey & Deborah Mann	David & Elayne Weener
Raymond & Denise DeRiggi	Stacey & Joan Mobley	Joel & Bonnie Weinstein
Ira & Ann Friedman	Gary & Kay Moore	Barry & Lois Weiss
Steven & Randie Galler	Michael & Judie Muntner	Herb & Penny Wender
William & Maureen Goldfarb	Dick & Elsie Myers	Lorraine Whalen
Jeffrey & Chere Goldstein	Sheila Olshansky & Bob Kielser	Michael Wolfson
	Esmeralda & Onno Poppinga	Thomas & Marilyn Zemboch

---

## \$10,000 TO \$14,999

*Aggregate donations over the past five years*

George & Beth Abrams	Alan & Joanne Feldman	Dennis & Shelly Manes
Vickie Abrutyn	Howard & Patricia Fine	Bill & Sue Morris
Richard & Elaine Ades	Morton & Melanie Fishman	Marvin & Carol Odesky
Lana Anker	Welton & Susan Gersony	Simon & Elaine Parisier
Nathaniel & Linda Baker	Robert & Maxine Gillen	David & Ellen Paulson
Stanford & Amy Baratz	Charlene Gordon	Carolyn Phillips
Michael & Erika Barr	Michelle Haddad & Joel Schlesinger	Phillip & Lois Proger
David & Joyce Berkowitz	Judith Hans & Arden Bialek	Robert & Judy Rice
Vivian Bliss	Stephen & Susan Hilzenrath	Jason Robbins
Aimee Brash & Donald Osur	Warren Hudson	Gregory & Grace Ross
Eva Brisman	Nancy & Annie Josephs	Joel & Rosalie Rothenberg
Jonah Byer & Marianne Baker	Jeffrey & Marea Kahn	Paul Shapiro & Sharon Luckman
Jessie Chai & Thomas Poor	Arthur & Susan Kaufman	Shapiro
Irwin & Marlene Cohen	Alan & Nancy Kessman	Ronald & Phyllis Shaw
Paul & Sande Constantine	Ronald & Katherine Klein	Rudy & Linda Slucker
Jack & Nancy Cook	Mel & Beryl Lamster	Marianne Sokol
Martin & Joyce Cornick	Frances Lashinsky	Irwin & Linda Steinman
Paul & Karol Costa	Michael & Kathy Leob	Robert Stiehler & Nancy Weinstein
Ronald & Joan Daniels	Priscilla Leslie	Michael & Esther Stillman
Laura Weissman Davis & Mark Simon	Warren & Linda Lesser	Susan Stoddart & Chris Snook
Arnie & Pat Ditri	Allan & Anita Lubarsky	Roland and Christina Veit
	Janet Luke	Mark & Roberta Weisburger



# THE FOUNDATION'S PRINCIPAL DONORS

## \$7,500 TO \$9,999

*Aggregate donations over the past five years*

Linda Abrahamson  
Harold & Laney Becker  
Barry & Iris Bergman  
Mort & Diane Brill  
Donald Cohn & Barbara FitzGibbon  
Jim Cohn  
Donald & Kathy Draizin  
Michael & Ellen Dworetzky  
Tasso & Dora Fountoukidis  
Tammy Gould & Alan Silverman  
Linda Greenhouse  
David & Bea James  
Roma Josephs  
Larry & Joan Kripke  
Allan & Paula Landau  
Mariano & Eileen Leo  
Richard & Brenda Mandel  
Randi Margolin  
Charles & Ann McCarthy  
Lynne Misericordia  
Stephen & Ronda Monheim

Anthony & Eileen Montalbano  
Bob & Anita Naftaly  
David & Laura Perlman  
Kent & Dana Peterson  
Rubin & Sharon Pikus  
Gerald & Gwen Richman  
Alan & Esther Ritchie  
Richard & Jane Shapiro  
Stuart & Frederica Shpetner  
Linda Silver  
Robert & Jo Steinhart  
Charles Tager  
Ronald & Anita Taylor  
Arlene Tofias  
Justin & Wendy Tulman  
Laura & Leonard Vitucci  
Linda & Brett Weiss  
Robert & Diana Weiss  
Karen Winer  
Morton & Cynthia Zetlin

---

## \$5,000 TO \$7,499

*Aggregate donations over the past five years*

Carlos & Maria Andrade  
Toby Bartosh  
Nancy Beren  
Barry & Marjorie Berg  
Arnold & Marilyn Blank  
Fredric & Marsha Brustein  
William & Susan Engelman  
Les & Judith Fishman  
Barry & Evelyn Friedenberg  
Anthony & Carolyn Gerardi  
Ronald & Gae Getlan  
Billy & Gail Gillman  
Norman Glassman  
Paul & Lynne Goldstein  
Mary Grimaldi  
Barry & Rozelle Grossman  
Daniel & Sharon Guterman  
Harvey Harris  
Ann Harte & Al Leizman

Geri Elias  
James & Rosalind Katcef  
Margery Katzenberg  
Herbert & Margaret Kishter  
Sandra Lefkofsky  
Blanche Lerner  
Marsha Levey & Bill Blandy  
Ronald & Maxine Levin  
John Lorenz & Hazel Dunnigan  
Spirangelos & Heidi Marie  
Maliagros  
Edward & Earlene McMenamy  
Edward & Deborah Meckler  
David & Leyah Namoff  
John & Lee Ostrowski  
Marvin & Sharon Paine  
Elaine Patterson  
Paula Rebak  
Michael Rich

Eugene & Vivian Rosen  
David & Dianne Rosenfield  
Richard & Vicki Rosenthal  
Ronald West & Lynda Rothstein  
West  
John & Patricia Ruggirello  
Mark & Marlene Senders  
Greg & Penny Sherry  
Richard & Nancy Shuman  
Gene & Hope Silverman  
Robert & Phyllis Snider  
Alden & Reba Stock  
James & Bonnie Swartz  
Tom & Tricia Trimble  
Charles & Diane Wasserman  
Sam & Sue Weinstein  
Howard Weinstein & Suzanne  
LeVine  
Gerald & Judith Wyckoff



# THE FOUNDATION'S PRINCIPAL DONORS

## \$2,000 TO \$4,999

*Aggregate donations over the past five years*

Jack & Carol Adelson  
Abdu & Henriette Aghzafi  
Harry & Doris Albirt  
Louis & Mary Alimena  
Ken & Lila Altman  
Joseph & Sharon Anderson  
Kenneth & Amy Arlein  
Peter & Barbara Aschheim  
David & Arlyn Bamberger  
Robert & Ann Barth  
Donald & Gloria Bell  
Louis & Stephanie Bell  
Stanley & Brenda Bellowe  
Jeffrey & Carole Bender  
Bruce & Sharon Blackman  
Betsy Bleznak  
Jerome & Carole Blumberg  
Lawrence Brookman  
Marc & Andrea Brookman  
Richard Budson  
Michael & Lois Burke  
Marilyn Canis  
Theresa Capuano  
Frank & Patricia Caruso  
Xiaomin & Diane Chen  
Larry & Myrna Cohen  
Marvin & Ann Cohn  
Fred Corrado  
Richard & Judith Cramer  
Harold & Barbara Danenberg  
Patsy Elliott  
Jeffrey & Sonia Denham  
Bryan & Lauren Donaghy  
Leonard & Dori Edelman  
Averell & Eileen Eisner  
Alden & Jennifer Englander  
Gerald & Ellen Falk  
Carl & Susan Feldman  
Gerald & Anita Feldman  
Michael & Marilyn Fiala  
Nona Fine  
Gary & Jeanette Fitzwater  
Robert & Renee Frank  
David & Carolyn Frank  
Al & Ellen Friedman  
Joseph & Carol Fuchs  
Leon & Arlene Fuhrman  
Alan & Susan Gallinson

Roger & Dale Gandall  
Brian & Dessa Glasser  
Donald & Carol Gleklen  
Stanley & Ellen Goldberg  
Libby Gould  
Regina Gyuricza  
Harvey & Zena Hafetz  
Robert Hafter & Cynthia Kaufman  
Harvey & Lois Harmon  
Lynn Heck  
Bill & Jennifer Hesse  
Sandra Hoffner  
Rosalind Hurwitz & Herb Stern  
Gayle Jacobs  
Marvin & Judy Kamensky  
Richard & Kileen Kaufman  
Russ & Barbara Kelly  
Steven & Nina Kessel  
Sam & Adrienne Klewans  
Edward & Susan Kline  
Eugene & Shirley Korth  
Richard & Ellen Krantz  
Richard & Joan Krim  
Rosalie Kurland  
Jeffrey & Carolyn Kushner  
Kit Lehrer  
David & Arlene Levine  
Barbara Levy  
Stewart & Dory Libes  
Vivian Lieberman  
Darryl & Lynn Lippman  
Jennifer Lobo  
Barry & Carol Loigman  
Ralph & Arlene Loveman  
Michael & Kristin MacDermott  
Robert & Barbara MacDermott  
Larry & Deborah Martin  
Robert & Susan Martinson  
Donna & Robert McDonald  
Richard Melchner  
Joan Meyers  
Michael & Linda Napolitano  
Richard & Barbara Natalizio  
Fred & Joan Newberg  
Stephen & Gayle Newman  
Norman & Susan Oblon  
Ronald & Ginette Ogur  
Joseph O'Hagan & Kyle Caparosa  
James & Susan Patrick

David & Donna Penyak  
Cyril & Marlene Pierce  
Ted & Judy Pincus  
Gerald & Linda Pollack  
Malcolm Portnoy & Ginny Pappalardo  
Bill & Nancy Rackoff  
Johnny Raimondi  
Don & Bobbie Ribatt  
David & Julie Rifkin  
Alan and Linda Roman  
Janie Rome  
Matthew & Ruth Rosenberg  
Todd & Hilary Rosenburgh  
Jay & Sheila Rosenthal  
Robert & Susan Rothenberg  
Douglas & Karen Rouff  
Jerome & Gail Roy  
Wanda Rubin  
Gerald & Susan Sack  
James & Virginia Sardo  
Fred & Elise Schulte  
Marion Seltzer  
Donna Shaw  
Allen & Debra Sheldon  
Lawrence & Susan Shell  
Jeffrey & Susan Shoham  
Ronald & Sheryll Silver  
Lewis & Lynn Silverman  
Edward & Vicki Slotnick  
Donald & Barbara Smith  
Russell & Linda Stoch  
Maxwell & Sandra Stolzberg  
Robert & Carolyn Suffian  
Mark & Fran Sugar  
Jay & Linda Sussman  
Michael & Ellen Sweeney  
Connie Tamburo  
Doreen Testa  
Gabe & Miriam Torok  
Jeffrey & Nancy Trockman  
Howard Waltuch  
Charles & Arleen Wayte  
Charles & Lynne Weiss  
Gary & Sherry Wolff  
Martin & Mona Zeliger  
Mark & Amy Zusy  
Bruce & Ilene Zwick





*Together We Are  
Making a Difference*